

ELMA LEWIS

AMPHITHEATRE

JULY 2013

CONCEPTUAL DESIGN PACKAGE

MARCIANO/MATTHEW/MUNROE

ELMA LEWIS

AMPHITHEATRE

OBJECTIVE

Revitalize the Franklin Park Bear Dens into a primary Point of Interest within the 485 acres of Boston's Franklin Park.

Pay homage to the original design of Arthur Shurtlecliff while upgrading the 1.5 acre zone into an area for recreation and public performance.



RESTORE THE 1.5 ACRE GROUNDS OF ARTHUR SHURTLECLIFF'S 'BEAR DENS'

CREATION OF THE ELMA LEWIS TRAIL . . . PROVIDE SIGNAGE ALONG SEAVER

+ WALNUT . . . CREATION OF AN AREA FOR PUBLIC ART INSTALLATIONS . . .

CREATION OF AN OUTDOOR PERFORMANCE VENUE FOR UP TO 300 PERSONS

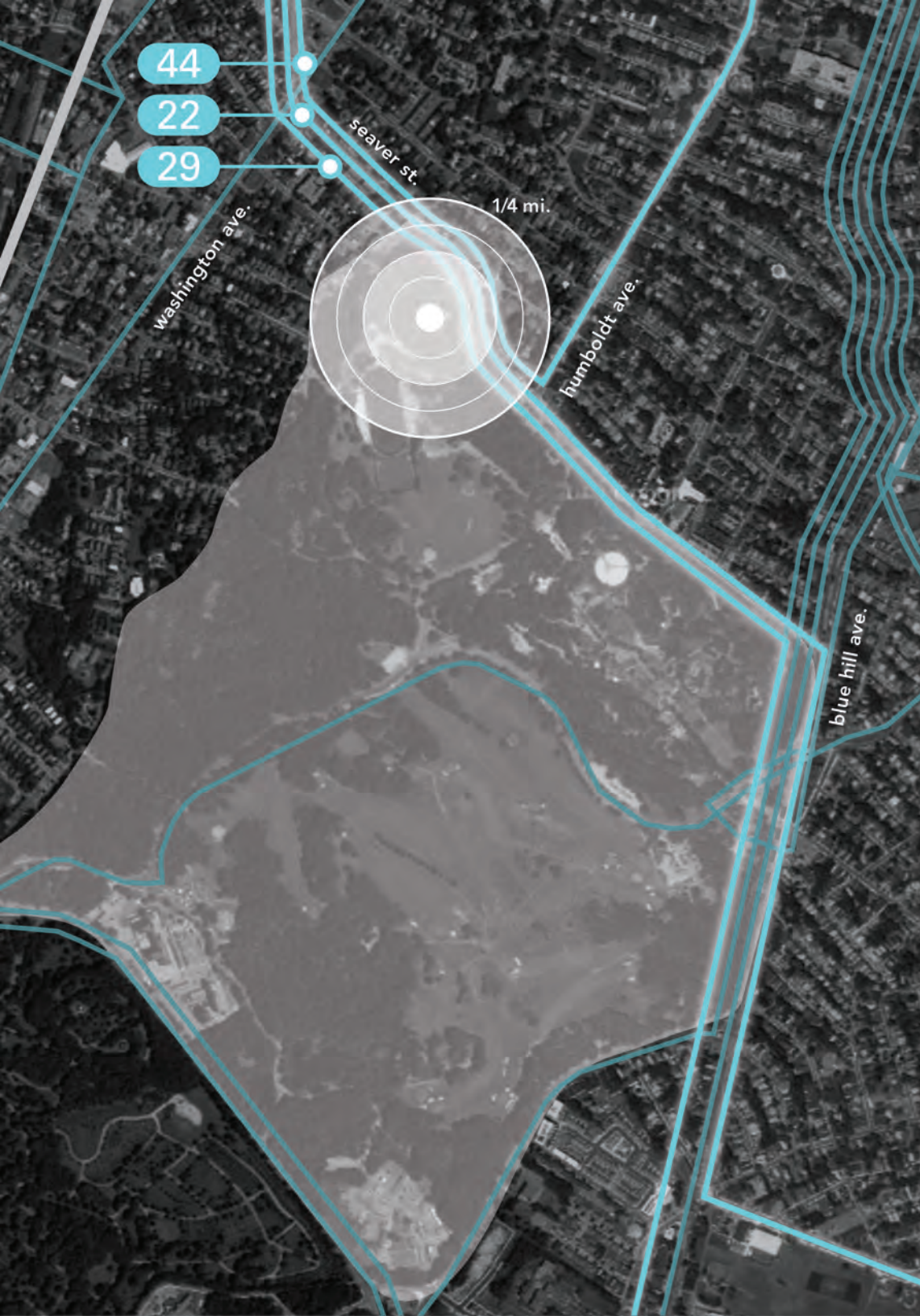
CREATION OF AN AREA FOR PUBLIC RECREATION INCLUDING A SKATEPARK



TRANSPORTATION LINKS

Despite Franklin Park's central location in Boston, few visitors arrive via public transit. The Orange MBTA route runs only 1/2 mile to the west and there are eight bus lines that circumvent the park, several of which have among the highest ridership in the city. In many of cases, the segment along Franklin Park makes up a considerable portion of the total route but these 'park stops' continue to be underrepresented in total number of boardings. The 22, 29, and 44 buses have stops less than 1/4 mile from The Bear Dens, providing a convenient link to greater Boston.

- Bus Route
- Proposed Bus Route
- 'T' Route
- Proposed Urban Ring Route
- 'T' Station



44

JACKSON > RUGGLES



10%

% of bus stops along Franklin Park

28 STOPS

3%

% of ridership boarding at stops along Franklin Park

3700 WEEKDAY RIDERS

22

ASHMONT > RUGGLES



27%

% of bus stops along Franklin Park

34 STOPS

11%

% of ridership boarding at stops along Franklin Park

7100 WEEKDAY RIDERS

29

MATTAPAN > JACKSON



24%

% of bus stops along Franklin Park

37 STOPS

16%

% of ridership boarding at stops along Franklin Park

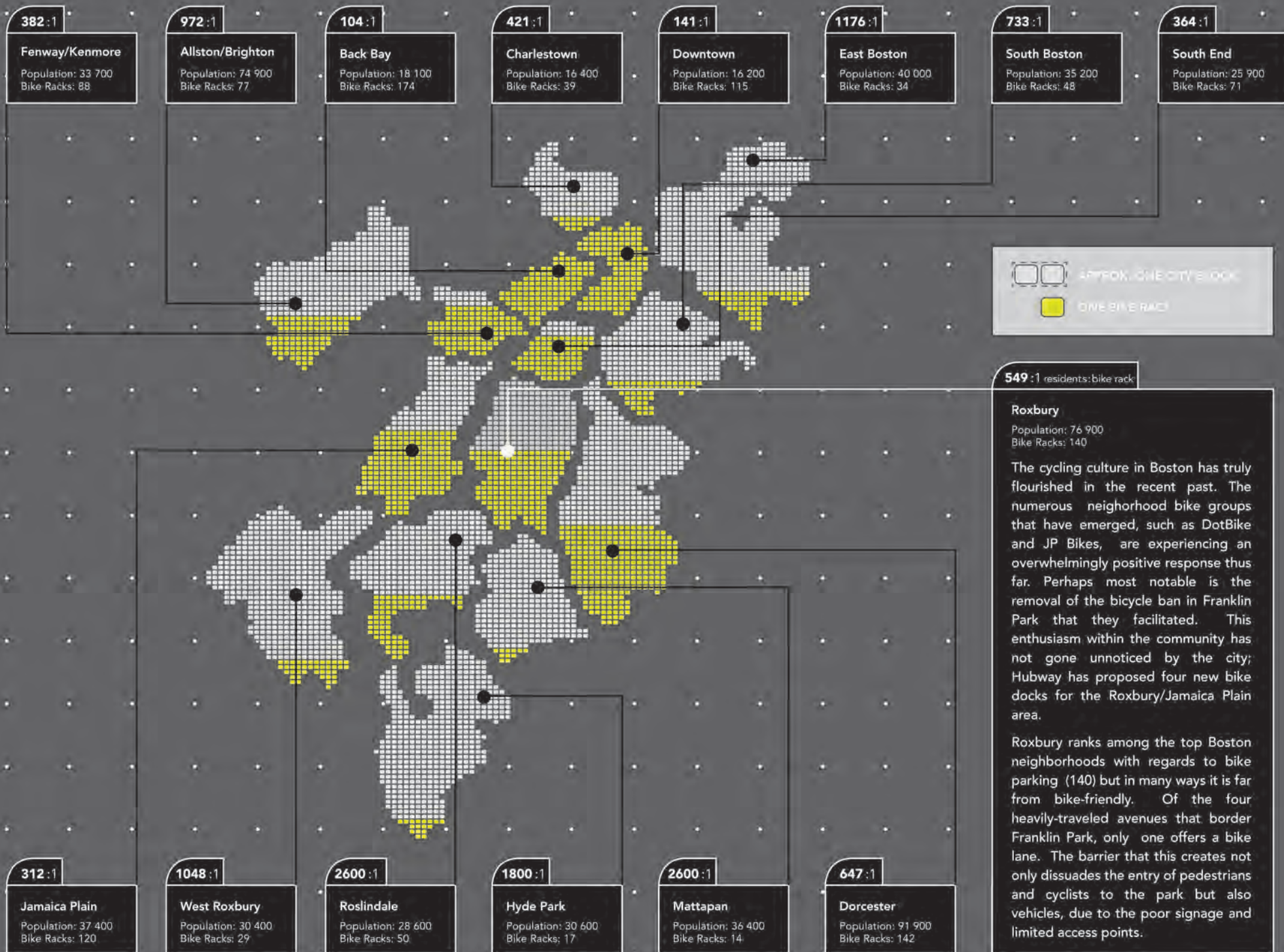
2100 WEEKDAY RIDERS



BOSTON BIKES

Boston Bikes is a city-wide initiative that encourages citizens and visitors to use bicycles for fun, exercise, and transportation. Since its launch in 2007, 60 miles of new bike lanes have been installed and ridership in the city has nearly doubled. Much of the credit for this success can be attributed to the introduction of the Hubway, a bike-sharing program available to both visitors and residents.

- Bike Path
- Proposed Path
- Bike Lane
- Shared Lane
- Hubway
- Proposed Hubway



Roxbury
 Population: 76 900
 Bike Racks: 140

The cycling culture in Boston has truly flourished in the recent past. The numerous neighborhood bike groups that have emerged, such as DotBike and JP Bikes, are experiencing an overwhelmingly positive response thus far. Perhaps most notable is the removal of the bicycle ban in Franklin Park that they facilitated. This enthusiasm within the community has not gone unnoticed by the city; Hubway has proposed four new bike docks for the Roxbury/Jamaica Plain area.

Roxbury ranks among the top Boston neighborhoods with regards to bike parking (140) but in many ways it is far from bike-friendly. Of the four heavily-traveled avenues that border Franklin Park, only one offers a bike lane. The barrier that this creates not only dissuades the entry of pedestrians and cyclists to the park but also vehicles, due to the poor signage and limited access points.

POINTS OF INTEREST

What is necessary is a reconfiguration of the Bear Dens in order to host civic events such as Elma Lewis Playhouse in the Park, and to provide both young and old a place to call their own within the community. So who is the end-user that benefits to gain from a redevelopment of The Bear Dens?

Numerous Points of Interest, both surrounding and within Franklin Park itself, already attract a multitude of persons each day and serve to potentially direct foot traffic towards The Bear Dens as well. Notable Points of Interest include:



WHITE STADIUM

1

The closest Point of Interest to The Bear Dens is White Stadium. A mere 450 feet South West of the steps lies this 10,000 seat athletic facility. It is currently used by the City of Boston during the football season. The facility is specced for a \$45M redevelopment led by John fish.



FRANKLIN PARK PLAYSTEAD

2

Located just down Playstead Road from White Stadium is the Franklin Park Playstead. This is an area, which can be reserved by families/friends looking to have a large outdoor gathering, and during the summer months people can be seen barbecuing there.



TIFFANY MOORE TOT LOT

3

Dedicated in remembrance of the 1988 murder of Darlene Tiffany Moore, the playground opened on July 30th, 2011. This play structure represents the potential for success that comes with investment in community. It is an ideal play area for children and serves as a positive civic gesture.



FRANKLIN PARK ZOO

4

Occupying a total of 72 out of the 485 acres of Boston's Franklin Park, it is a major Point of Interest adjacent to The Bear Dens. In the year 2009, the zoo attracted a total of 342,313 visitors. The Dens have a historical link to this establishment and could benefit symbiotically from the visitors today.



ELLIS ELEMENTARY SCHOOL

5

With 394 students (grades K1-5) and located just four blocks down Walnut Avenue from The Bear Dens, the David A. Ellis Elementary School represents a prime user group for The Bear Den redevelopment. Especially considering their already-existing before and after school programs.



NATIONAL CENTER OF AFRO-AMERICAN ARTISTS (NCAAA)

6

Founded in 1968 by Elma Lewis, the NCAAA is committed to preserving and fostering the cultural arts and heritage of African Americans. In honor of the late Elma Lewis, The Bear Dens are to be renamed: The Elma Lewis Amphitheatre.

LONG CROUCH WOODS

At the northernmost edge of Boston's Franklin Park is a section known as the Long Crouch Woods. Flanked by Walnut Avenue and Seaver Street, it represents a key asset to the neighborhoods of Roxbury & Dorchester as well as the larger municipal area as a whole. Approximately 1.5 acres of these woods are, currently, composed of what was once The Bear Dens; originally a part of the Franklin Park Zoo. Currently underutilized, but remarkably beautiful, the Dens were designed by Arthur Shurtleff in 1912. Their potential is undeniable and even with no amenities provided, joggers and passersby are, now, able to appreciate what is essentially a 20th century ruin.

What is necessary is a reconfiguration of the Bear Dens to ensure the safety of user groups + to create a new attractor within Franklin Park. Areas of concern include:



THE UN-NAMED PATH

1

Located roughly 250 feet to the east of Playstead Road is an unnamed dirt path (see Image 1). It was, conventionally, the processional path leading to The Bear Dens, the path has fallen into disrepair. Accommodation of an influx of persons would require the re-paving of this path along with an unique name-designation (separate from Playstead Road).



2.LACK OF SIGNAGE

2

Image 2 depicts a path leading from Playstead Road to The Bear Dens. It is at intersections such as this that signage will need to be implemented in order to provide awareness of this new point of interest. The Playstead is a primary location for cookouts, especially during the warmer months; Clear signage will help to direct secondary user groups.



3.STONWORK REPAIR

3

Safety of occupants is a primary factor of this proposed reconfiguration of Franklin Park's Bear Dens. The stonework is truly unique and aesthetically pleasing, but in certain areas (see Image 3) stone is crumbling and falling apart. The re-pointing of certain areas of stone will be necessary to ensure the safety of end-users.



4.RUST AND CORROSION

4

Image 4 depicts another safety concern of The Bear Dens. The corrosion of the metal that once formed the bars of the dens is not only a visual blight but also presents a falling and medical danger. The primary medical concern revolves around the potential for transmission of tetanus. The metal must be removed in order to advert these concerns.

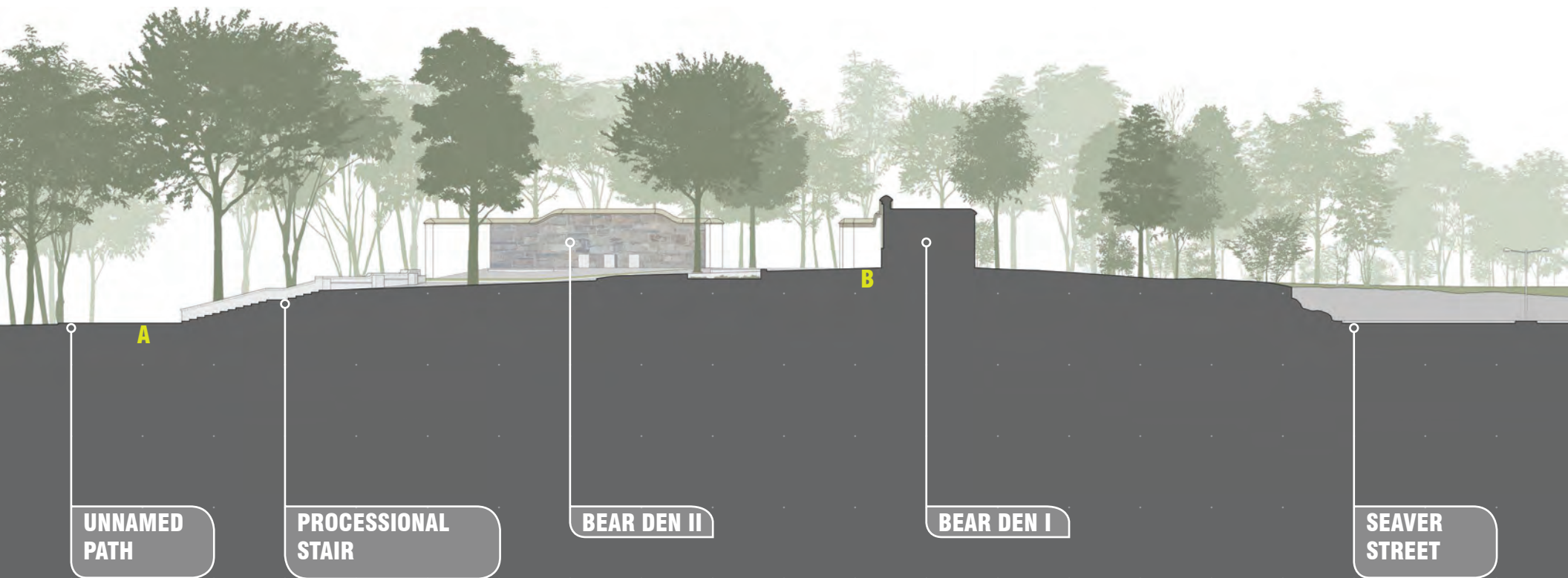
SITE PLAN



**DEN
2**

**DEN
3**

**DEN
1**



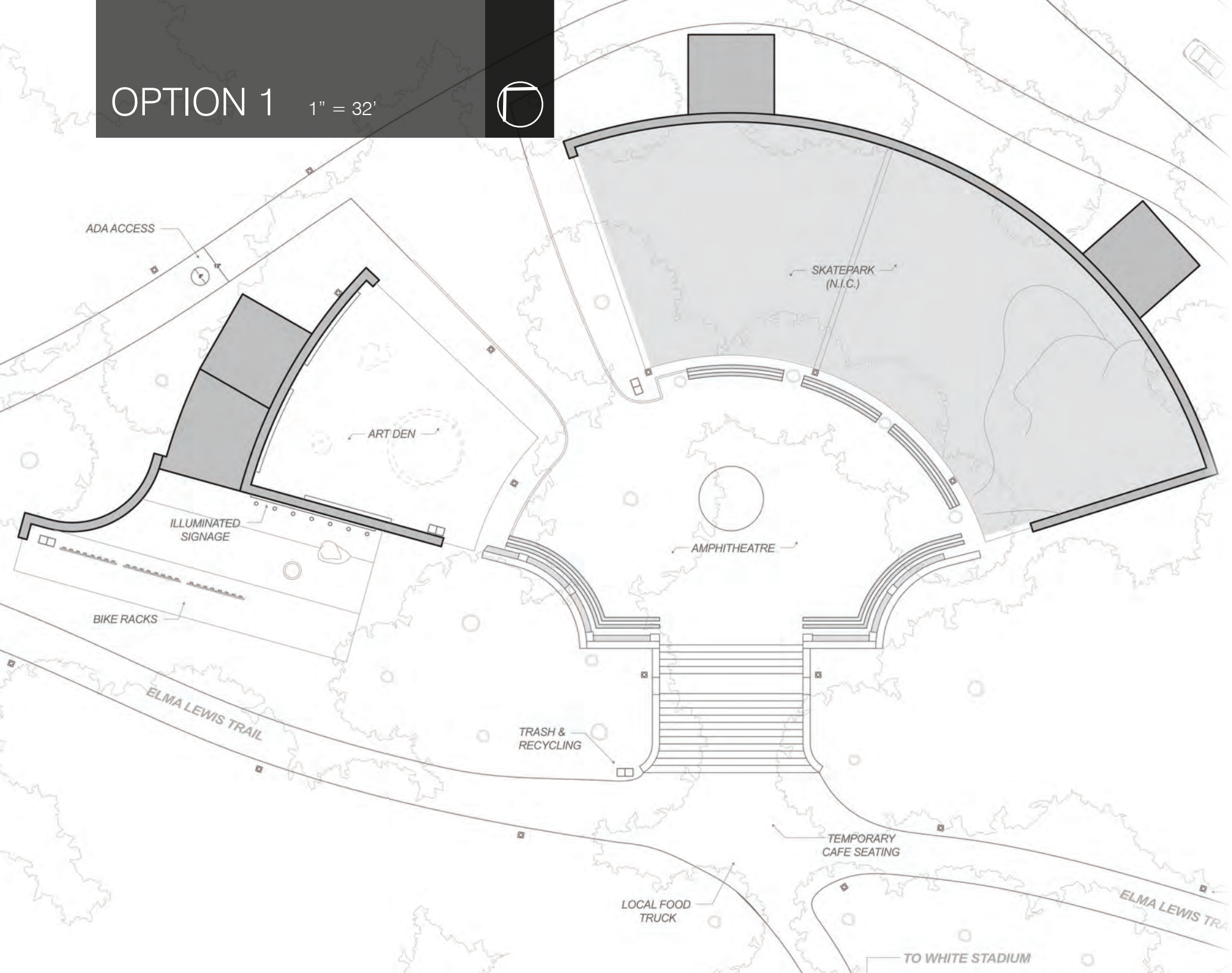
With a grade change of 14.5 feet from points **A** to **B** at the site of The Bear Dens. There is already a sense of presence to the site. The procession as one ascends the stairs is theatrical and already well-suited for a civic space.

DESIGN IMPLEMENTATION

Following the restoration of The Bear Dens, the programming of the site will establish two new points of interest within the Long Crouch Woods: (1) An Outdoor Amphitheatre (2) A Recreation/Skatepark Area

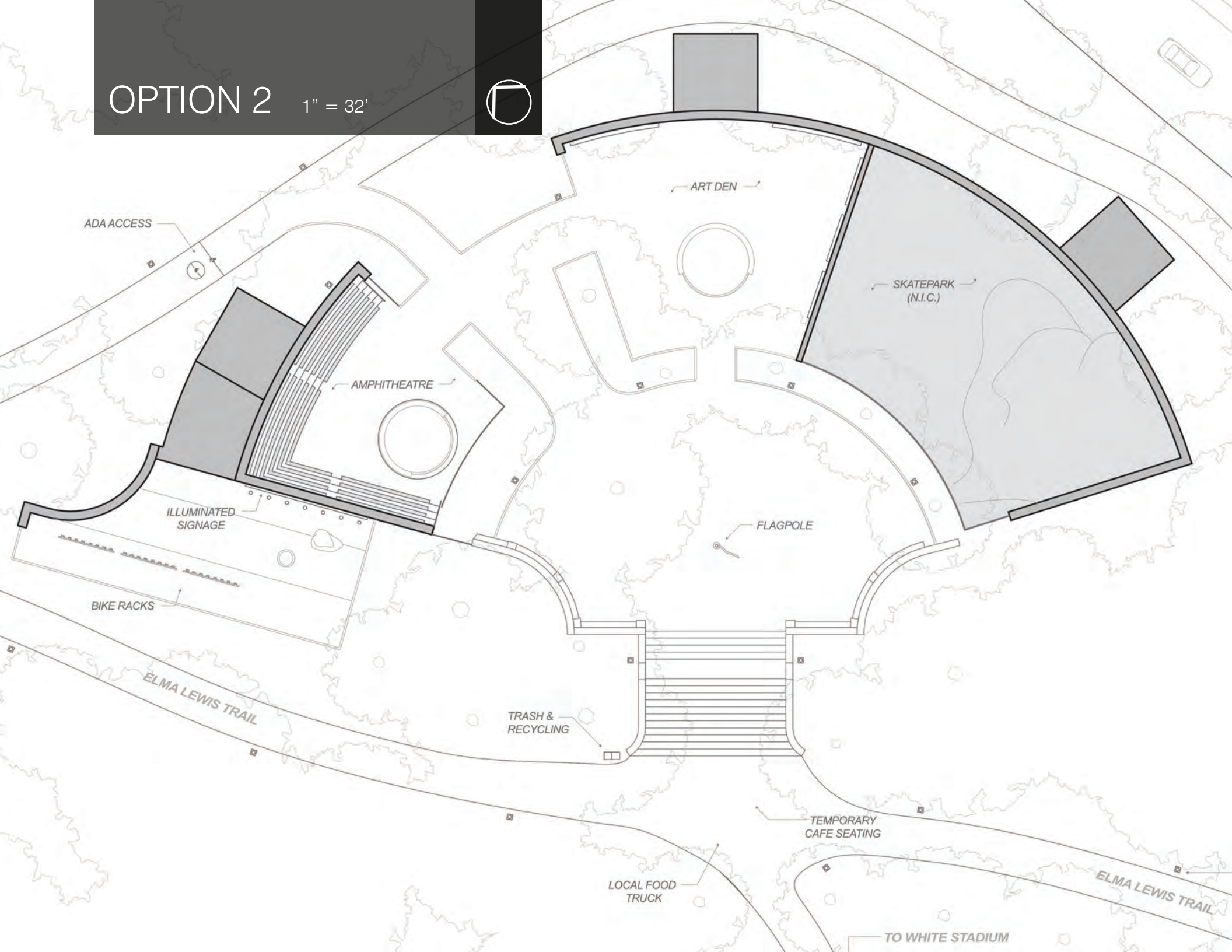
OPTION 1

1" = 32'



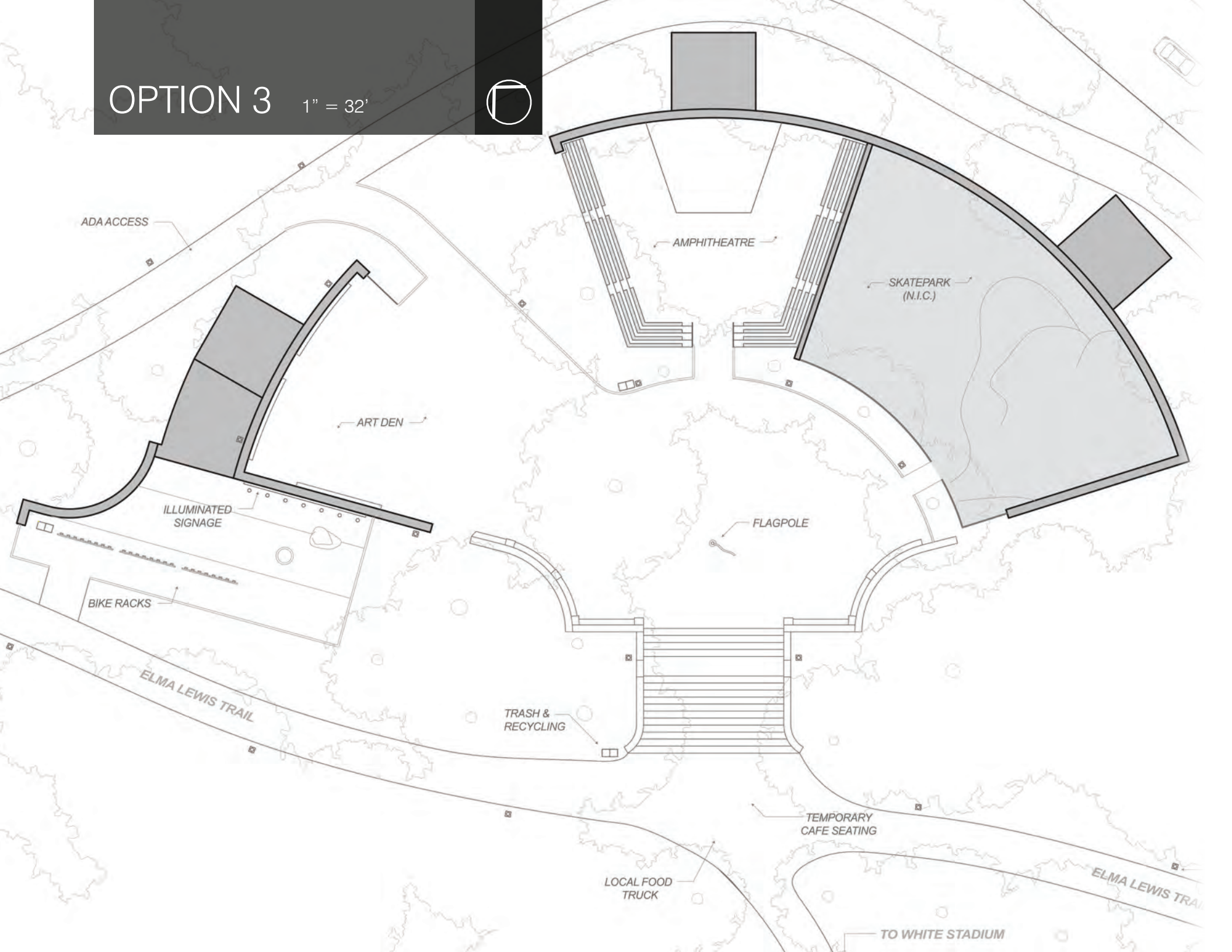
OPTION 2

1" = 32'



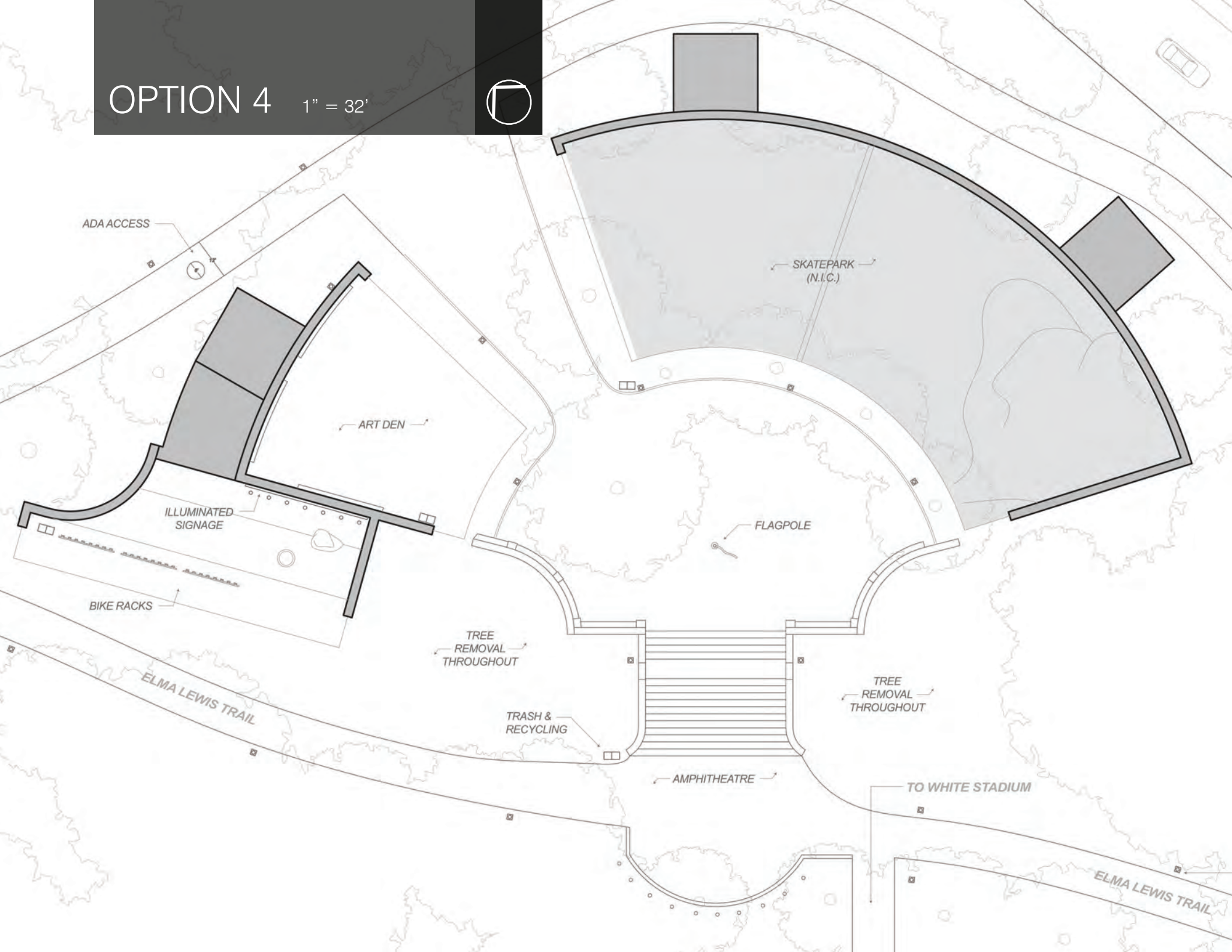
OPTION 3

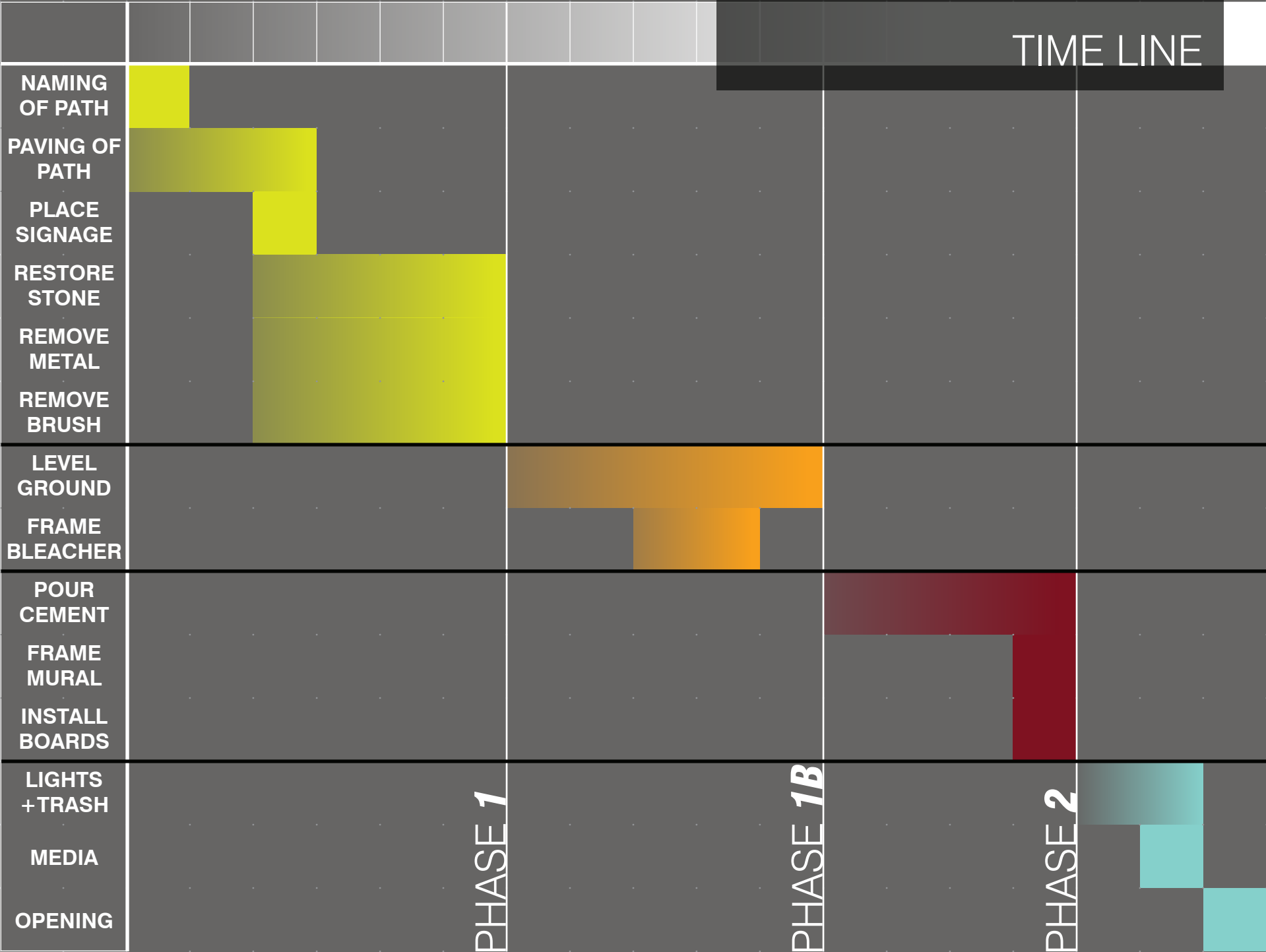
1" = 32'



OPTION 4

1" = 32'





MARCIANO/MATTHEW/MUNROE

For inquiries please contact Chris Marciano
chris@3m-arch.com